



NIPPON STEEL Stainless Steel Corporation

SOLUTION

JAPAN QUALITY

company profile

Wire Rods

Sheet and Strip

Plates and Sheets

EXPERIENCE

KNOWLEDGE

INNOVATION

stainless.nipponsteel.com



- 01. Solution
- 02. Message from the President
- 03. NIPPON STEEL Group
- 04. Corporate History
- 05. Domestic Bases
- 09. Cold-rolled Stainless Steel Sheets and Coils
- 10. Tandem-rolled Stainless Steel Sheets and Coils
- 11. Stainless Steel Heavy and Medium Plates
- 12. Stainless Steel Wire Rod and Bars
- 13. Environmental Policy

As a member of the Nippon Steel Group, we will contribute to advancing society through stainless steel.

Our company was launched on April 1, 2019 following integration of part of the steel sheet business contained within the special stainless steel business the former Nippon Steel & Sumitomo Metal Corporation, the steel sheet business contained within the stainless steel business of the former Nisshin Steel Co., Ltd., and the former Nippon Steel & Sumikin Stainless Steel Corporation.

Making a fresh start as the only company manufacturing stainless steel sheets, plates, and wire rods and bars in the Nippon Steel Group, we will bring together the technical capabilities, development strength, and the passion for stainless steel that every employee feels in order to provide powerful solutions through stainless steel that will satisfy a wide range of customers in Japan and overseas, and will strive to be a stainless steel manufacturer with a strong global presence.

Representative Director and President



NIPPON STEEL Stainless Steel Corporation

Representative Director and President **Akihiko Inoue**

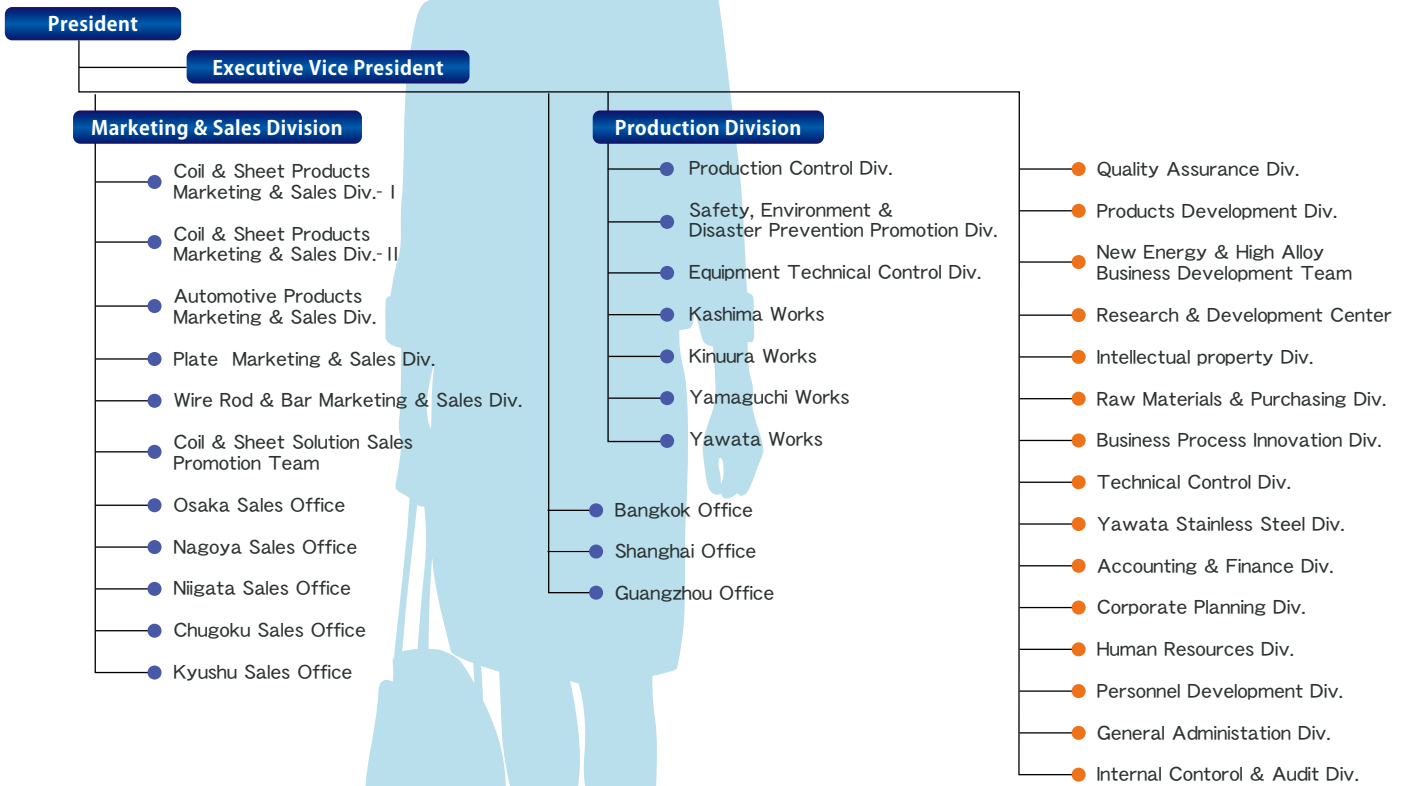
Corporate Data

Name:	NIPPON STEEL Stainless Steel Corporation
Business area:	Production, sales, and other related business of stainless steel
Established:	April 1, 2019
Capital:	5.0 billion yen
Shareholder:	Nippon Steel Corporation 100%
Employees:	2,900
Head office address:	Tekko Building, 1-8-2 Marunouchi, Chiyoda-ku, Tokyo 100-0005

NIPPON STEEL Group

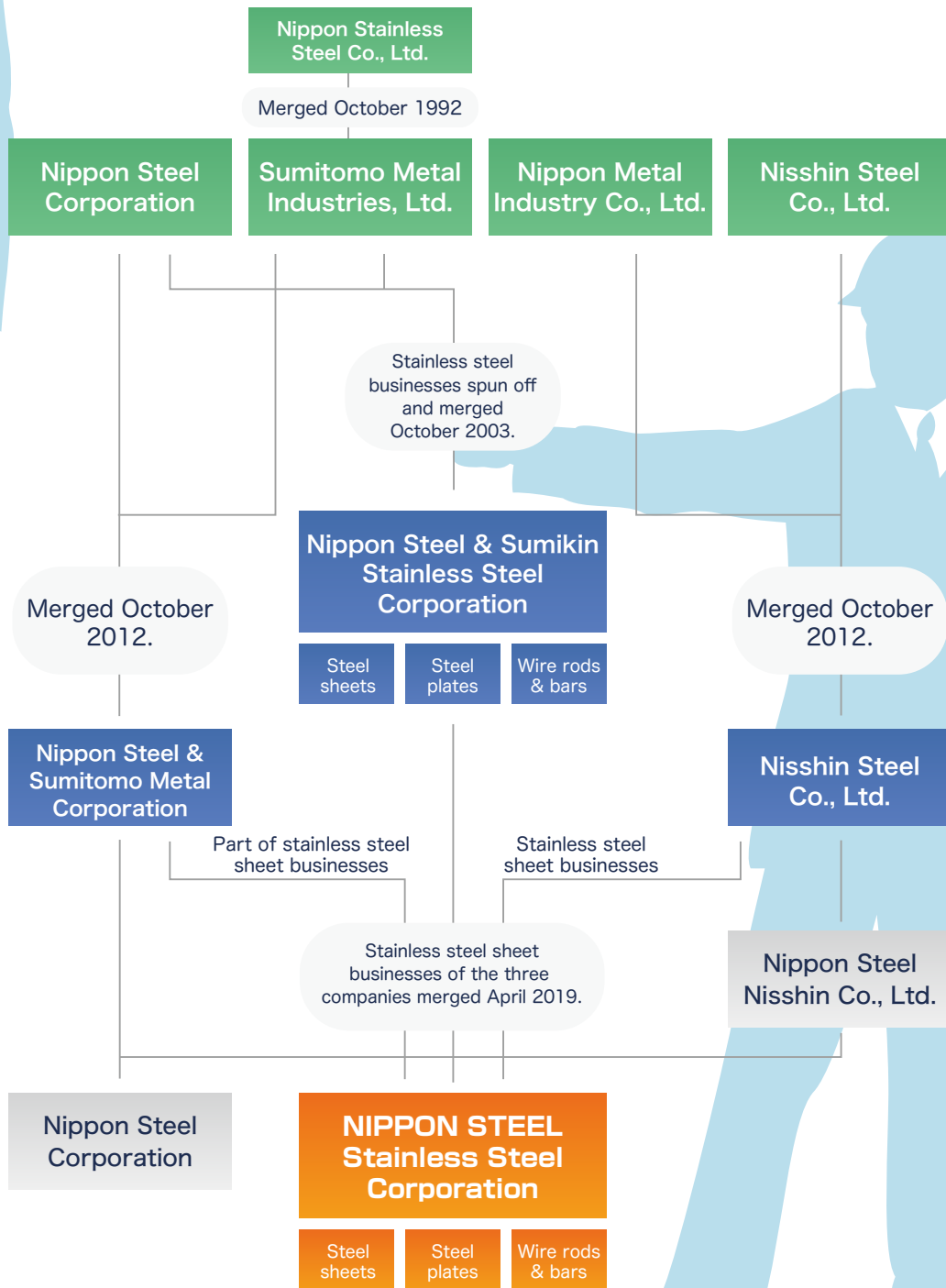


Organization Chart

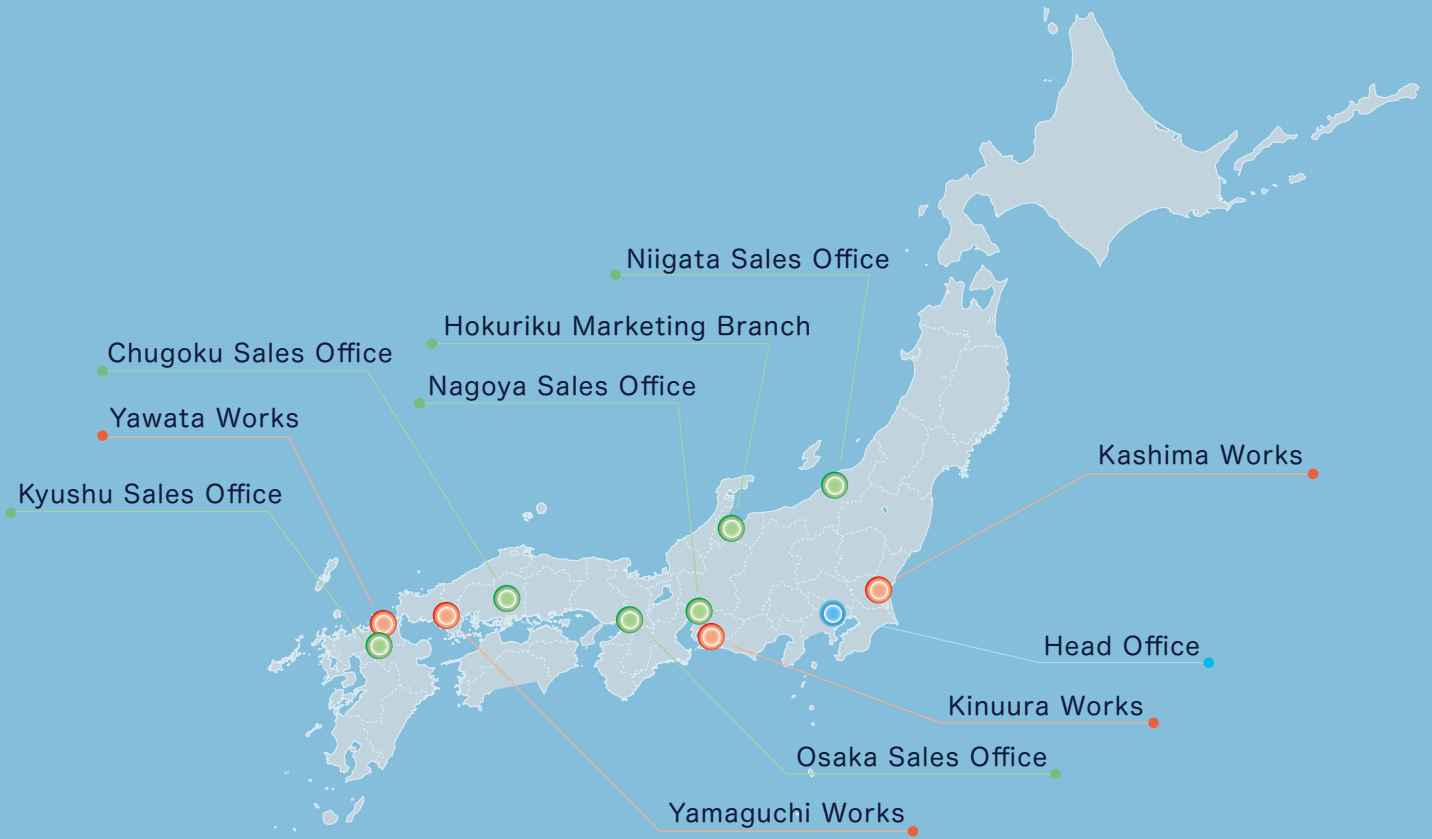


Corporate History

Our company was launched as the largest general stainless steel manufacturer in Japan following the integration of a part of the steel sheet business contained within the special stainless steel business (steel sheets, shaped steel) of the former Nippon Steel & Sumitomo Metal Corporation, the steel sheet business contained within the stainless steel business (steel sheets, steel pipes, and tubes) of the former Nisshin Steel Co., Ltd., and the former Nippon Steel & Sumikin Stainless Steel Corporation.



Domestic Bases



Overseas Bases



Head Office

Tekko Building 17F, 1-8-2 Marunouchi, Chiyoda-ku, Tokyo 100-0005, Japan
Phone +81-3-6841-4800

Access

JR

Tokyo station (Yaesu North Exit, Nihonbashi Exit), 2 minutes on foot

Tokyo Metro

Otemachi Station (Exit B10), 2 minutes on foot

Nihonbashi Station (Exit A3), 3 minutes on foot

Mitsukoshi-mae Station (Exit B3), 3 minutes on foot

Branches

Osaka Sales Office

Sumitomo Bldg. 4-5-33 Kitahama, Chuo-ku, Osaka-shi,
Osaka 541-0041, Japan
Phone +81-6-4706-1180

Nagoya Sales Office

Takisada Bldg.2-13-19 Nishiki, Naka-ku ,Nagoya-shi, Aichi
460-0003, Japan
Phone +81-52-232-2250

Niigata Sales Office

Taiju-Seimei Niigata Bldg. 1-3-10 Higashi Oodori, Chuo-ku, Niigata-shi,
Niigata 950-0087, Japan
Phone +81-25-246-3113

Chugoku Sales Office

Hiroshima-Teppouchou Bldg. 10-12 Teppouchou, Naka-ku,
Hiroshima-shi, Hiroshima 730-0017, Japan
Phone +81-82-511-5115

Kyushu Sales Office

Hakata-NS Bldg. 5-18 Tenya-machi, Hakata-ku, Fukuoka-shi, Fukuoka
812-0025, Japan
Phone +81-92-273-7090

Hokuriku Marketing Branch

Kitanippon Sakurabashi Bldg. 1-18, Sakurabashi-dori, Toyama-shi,
Toyama 930-0004, Japan
Phone +81-76-415-0527

Board of officers



Overseas Offices

Bangkok Office

(NS-Thainox Auto Company Limited.)

1 MD Tower, 20th Floor, Soi Bangna-Trad 25, Bangna-Trad Road, KM.3,
Bangna Nuea, Bangna, Bangkok 10260 Thailand
Phone +66-2-744-0720

Shanghai Office

(NIPPON STEEL Stainless Steel (Shanghai) Company Limited)

Room No.904, UNITED PLAZA, 1468 Nanjing Road West, Shanghai 200040, China
Phone +86-21-62892928

Guangzhou Office

(NIPPON STEEL Stainless Steel (Shanghai) Company Limited Guangzhou Branch)

Room No.1404, South Tower, GT Land Plaza 2, No.8 Zhujiang Xi Road,
Guangzhou 510623, China
Phone +86-20-38739850

Works

Kashima Works

2-1 Hikari, Kashima-shi, Ibaraki 314-0014, Japan
Phone +81-299-84-3702

Kinuura Works

1 Hama-machi, Hekinan-shi, Aichi 447-8610, Japan
Phone +81-566-48-7211

Hikari Area Yamaguchi Works

3434 Ooaza-shimata, Hikari-shi, Yamaguchi 743-8550, Japan
Phone +81-833-71-5004

Shunan Area Yamaguchi Works

4976 Nomuraminami-machi, Shunan-shi, Yamaguchi 746-8666, Japan
Phone +81-834-63-0112

Yawata Works

2108-1 Aza-hato, Ooaza-maeda, Yawatahigashi-ku, Kitakyushu-shi,
Fukuoka 805-0058, Japan
Phone +81-93-672-2356

Yamaguchi Works

Hikari Area

Overview

This plant was born in 1955 with the installation of the first completely continuous wire rod mill in Japan. As a manufacturing site equipped with a steelmaking plant, cold strip mill, and wire rod and bar mill, it continually delivers products that fit the times and satisfy the customers.

Address

3434 Ooaza-shimata, Hikari-shi, Yamaguchi 743-8550, Japan
TEL: +81-833-71-5004



Hikari Steelmaking plant:
AOD furnace



Hikari Cold strip mill:
No. 3 cold rolling mill



Wire rod and bar mill: Laying head

Shunan Area

Overview

In 1958, this plant installed the first-ever Sendzimir mill in Japan. It subsequently introduced revolutionary new processes such as the LD converter and VOD (vacuum oxygen decarburization) in steelmaking, and tandem Sendzimir mills in cold rolling. It meets a diverse range of market needs including steel grades, finishes, and other specifications to meet customer requirements.

Address

4976 Nomuraminami-machi, Shunan-shi, Yamaguchi 746-8666, Japan
TEL: +81-834-63-0112



Shunan Steelmaking plant:
No. 2 continuous casting machine



Shunan Cold strip mill:
No. 3 tandem cold rolling mill



Shunan Cold strip mill:
Ultra thin-gauge mill

Kashima Works

Overview

Since its founding as Kashima Nippon Stainless Steel Corporation in 1968, this plant has for many years manufactured cold-finished stainless steel sheet and strip as a stainless steel cold strip mill. It makes use of the high-grade manufacturing technologies that it developed as a base for stainless steel sheet and strip manufacturing in a large number of product areas.

Address

2-1 Hikari, Kashima-shi, Ibaraki 314-0014, Japan
TEL: +81-299-84-3702



Cold strip mill:
No. 3 cold rolling mill



Cold strip mill:
No. 2 annealing and pickling line



Cold strip mill:
Automated guided transport vehicle (AGV)

Kinuura Works

Address

1 Hama-machi, Hekinan-shi, Aichi 447-8610, Japan
TEL: +81-566-48-7211

*Kinuura works has ended all the production in the end of March, 2022

Yawata Works

Overview

This plant began operations as the general plate plant of Yawata Works at Yawata Steel in 1957, and began production of stainless steel plates in 1963. The plant was renovated in 1988, becoming the world's only (at that time) dedicated stainless steel plant with a quarto rolling mill.

It is positioned as a plate manufacturing site with production that is on one of the largest scales worldwide.

Address

2108-1 Aza-hato, Ooaza-maeda, Yawatahigashi-ku, Kitakyushu-shi, Fukuoka 805-0058, Japan
TEL: +81-93-672-2356



Plate mill:
Finish rolling mill



Plate mill: Heat treating furnace



Plate mill: Cold leveller



Cold-rolled Stainless Steel Sheets and Coils



Rail car



Roof of a building



Integrated kitchen system



Refrigerator



Roof of a dome



IH-type rice cooker



IH-applicable pans



Escalator



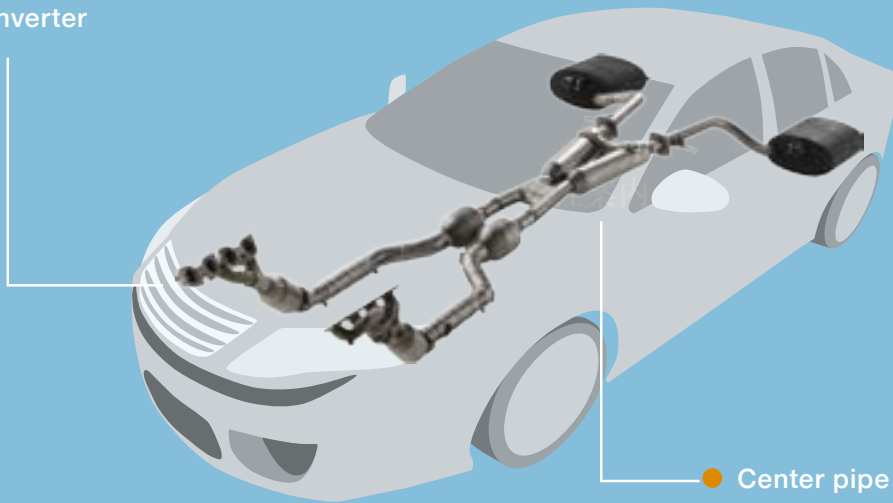
Tandem-rolled Stainless Steel Sheets and Coils



- Exhaust manifold
- Converter



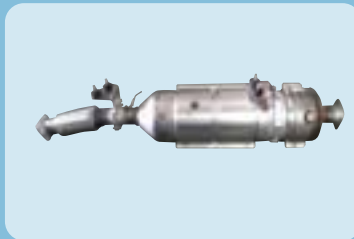
- Main silencer
- Tail pipe



- Center pipe



Exhaust heat recovery unit



DPR



Fuel inlet pipe

Tandem-cold-rolled stainless steel, made by carbon steel-manufacturing facilities, has corrosion resistance, heat resistance, workability, and other essential properties of stainless steel. Therefore, this stainless steel, though slightly different in metallic luster from general cold-rolled stainless steel, makes cost reduction possible according to use. Areas of application are spreading widely into automotive exhaust systems, reefer container outer panel, etc.



Refrigerated containers

Stainless Steel Heavy and Medium Plates



Seawater desalination plants



Pump



Building structural
(NSSC®2120)

We supply wide range and abundant grades of stainless steel plates including Duplex from Yawata Works specialized for stainless plates and installed powerful Quarto plate mill and leveler.
Our products are used extensively for tanks, plants and infrastructure such as seawater desalination.



Chemical tanker



LNG plant



Beer tanks



Sputtering system



Intake tower



Monument



Stainless Steel Wire Rod and Bars



Springs



Automotive parts



Screws•Bolts

Because of years of experience, our products are available in a wide range of grades and sizes. We trust it will satisfy our customer's requirements in the various applications of automotive, civil engineering and construction, home appliances, industrial machineries, household goods and leisure goods.



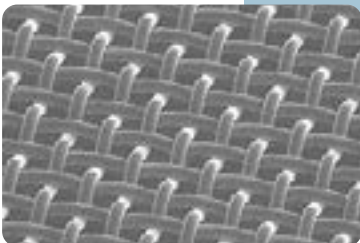
Reinforcing bars



Precise shafts



Profile wires



Screen mesh



Welding rod and wire



Kitchen utensils



Environmental Policy

We will conduct our business activities in harmony with the environment by understanding the importance of environmental preservation and continuing our efforts to reduce environmental burdens and other environmental problems.

1. We will establish our own environmental preservation system in accordance with the ISO14001 Environmental Management System and continuously try to improve the environment by setting environmental goals and objectives and reviewing them as necessary in the course of our activities.
2. We will take environment-friendly methods and means into consideration in every phase of production and try to reduce environmental burden and prevent environmental pollution.
3. We will support and promote global-scale environmental preservation activities which include energy saving, resource conservation, and recycling.
4. We will abide by environmental regulations and other related requirements prescribed by national and local governments and actively take part in regional environmental activities.



RHF



SAF



Greening of Work Sites



TECHNOLOGY
DEVELOPMENT
QUALITY

一步先の未来を創る
Creating the future one step ahead

